

## Gail Harker, L.C.G.I.



Gail Harker, LCGI, is a Canadian who resided for nearly 20 years in Britain, until returning to America in 1995. She moved to Britain in 1976 with her American husband and family. She studied art in Canada, Scotland, and England. She completed both Parts 1 and 2 of the City and Guilds Design and Embroidery course, with *Distinction* in both parts. She

qualified for the Senior Award of *Licentiate*ship (LCGI) given by the City and Guilds of London Institute. Gail is a teacher of several City and Guilds Embroidery courses. She authored five books: *Embroidery Skills: Machine Embroidery* (published internationally in five languages), *Merehurst, Fairy Tale Quilts and Embroidery*, *Merehurst, Christmas Stitches*, *Cassell*, and *Tassel Making*, self published. She is a contributing author for: *Starting to Stitch Creatively* (Batsford), wherein she authored the section on Materials, and contributed to the Machine Embroidery chapters for the *Merehurst Book of Needlework*. Her latest book, *Creative Machine Embroidery*, was published in 2001 by Batsford, and reprinted in 2003 by Sterling.

## Maureen Goldsmith.



Maureen is a successful, award-winning teacher who has been instructing students in Patchwork & Quilting for over 15 years, and has been a quilter herself for 25. She recently achieved the internationally recognized City & Guilds Level 3 Certificate in Patchwork and Quilting, an advanced course of training over 4 years. She was the Canadian Quilting Association's teacher of the year in 2000. She has

contributed articles to several publications, as well as co-judged for various national juried quilt shows. Maureen has a full schedule of teaching engagements in every aspect of Patchwork and Quilting.

## Terms and Conditions

**Responsibility** - Submission of the signed course registration form constitutes the student's acceptance of all terms and conditions stated in the information supplied, and agreement that the Gail Harker Creative Studies Center cannot be held responsible or liable to our students for any act of omission, or for any injury, illness, death, loss, accident, delay or irregularity which may be occasioned during the course of any course of study. We assume no responsibility for losses or additional expenses due to influences beyond our control. Personal effects and art supplies (other than art materials supplied for classroom instruction) are the sole responsibility of the student at all times. We reserve the right to cancel any class in which case we are liable only for any fees paid to Gail Harker Creative Studies Center. We reserve the right to reschedule any class or replace any instructor without refund to the student.

**Refunds** - A refund of 50% of fees paid (other than the nonrefundable deposit) will be made upon written application received at Gail Harker Creative Studies Center no later than 60 calendar days prior to the start of the class. No refunds will be made later than 60 days prior to start of the class because of the advance commitment required for the instructor and facility. All fees will be refunded if for any reason the class is canceled before the start date.

The nonrefundable deposit will hold your place. Deposit will apply to tuition. **Please note:** Students will be individually responsible for all associated costs and expenses such as: travel, accommodation, meals, etc. All payments may be made by personal check, money order, Visa, MasterCard, or American Express credit cards, payable to Gail Harker Creative Studies Center.

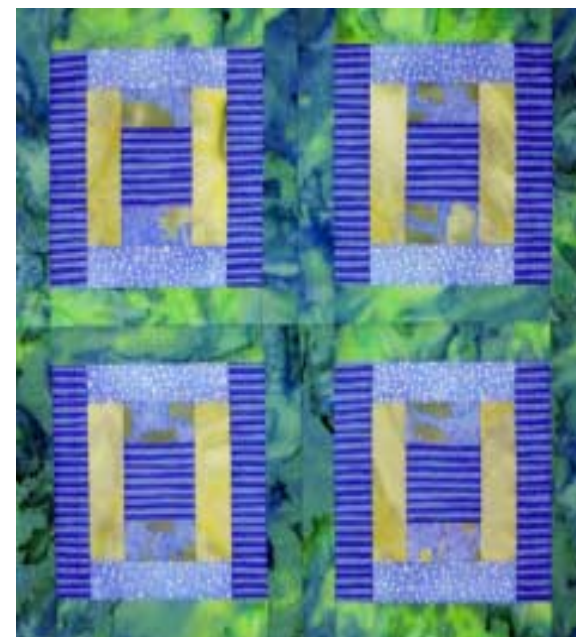


© Alba Romero

© Wenche Hemphill



## Patchwork & Quilting 7722-10 Level 1 Certificate 19 - 23 January 2005



© Kathleen Beck

**Tutors:** Gail Harker and  
Maureen Goldsmith



1751 NE Goldie Street, B-2  
Oak Harbor, WA 98277  
Phone: (360) 279-2105 Fax: (360) 279-0420  
E - mail: gailembr@gte.net  
www.gailcreativestudies.com  
Center #780027

**City & Guilds**  
**Creative Studies**

## Patchwork & Quilting

Exploration of color, using basic color theory, will be the starting point for this course. A small, but beautiful palette of colors will be used to paint fabric, leading to the discovery of spectacular textural effects. We will work around a theme based on ancient or modern tiling (mosaics), where simple geometric patterns are used.

The course not only provides sound technical teaching of patchwork, quilting, and sewing skills, but provides a beginning step to those who wish to use design and color from a more informed basis.

During the course, you will create a presentation of finished samples to include:

- ◆ Strip patchwork - Log Cabin, Court House Steps
- ◆ Shadow Appliqué using transparent effects
- ◆ A 9-patch block & variations of your own design
- ◆ Hand and machine quilted samples
- ◆ Free motion quilting
- ◆ English Patchwork
- ◆ Hand appliqué



© Susan Purney-Mark



© Isabel Parker



© Maureen with students

You will learn about:

- ◆ Designing with basic geometric shapes and lines
- ◆ Color theory and application
- ◆ Making templates and patterns
- ◆ Painting fabrics
- ◆ Creative use of transfer crayons and paints
- ◆ Basic machine and hand techniques for patchwork and quilting
- ◆ The use of different weights of threads for hand quilting
- ◆ Using a rotary cutter to accurately cut strips
- ◆ Record keeping and documentation
- ◆ Making connections between design, color, and technique

You will create a collection of work showing a variety of inspirational stitch samples and classroom notes which will provide a source of inspiration from which to work for years to come.

This is a City & Guilds of London Course. Time will be allowed for each student to complete a binder of samples and notes that will be used to assess your work for the award of the City & Guilds Certificate. Binders are due at the Gail Harker Creative Studies Center no later than 1 March 2005 (for those applying for the Certificate).

All postage costs will be the responsibility of the student.

*Photos left and right: Isabel Parker - a quilted sample. Susan Purney-Mark, Anne Louise Gillilan, and Jennie Turner - Painted and printed fabrics are ready to be quilted.*

**Please note:** There will be materials supplied for the class, for a Lab Fee of \$20 USD. You will also receive a supply list of other materials you will need for the course.

### Course schedule

Wednesday, 19 January	9:00 a.m. to 6:00 p.m.
Thursday, 20 January	9:00 a.m. to 9:00 p.m.
Friday, 21 January	9:00 a.m. to 6:00 p.m.
Saturday, 22 January	9:00 a.m. to 6:00 p.m.
Sunday, 23 January	9:00 a.m. to 3:00 p.m.

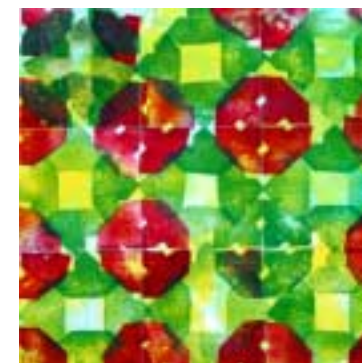
Approximate lunch hour will be 12:30 - 1:30 p.m..  
Dinner on late days will be 5:00 - 7:00 p.m.

## PATCHWORK & QUILTING 19 - 23 January 2005 \$600

A \$100 US deposit will hold your place in this course until 30 October 2004.



© Anne Louise Gillilan



© Jennie Turner