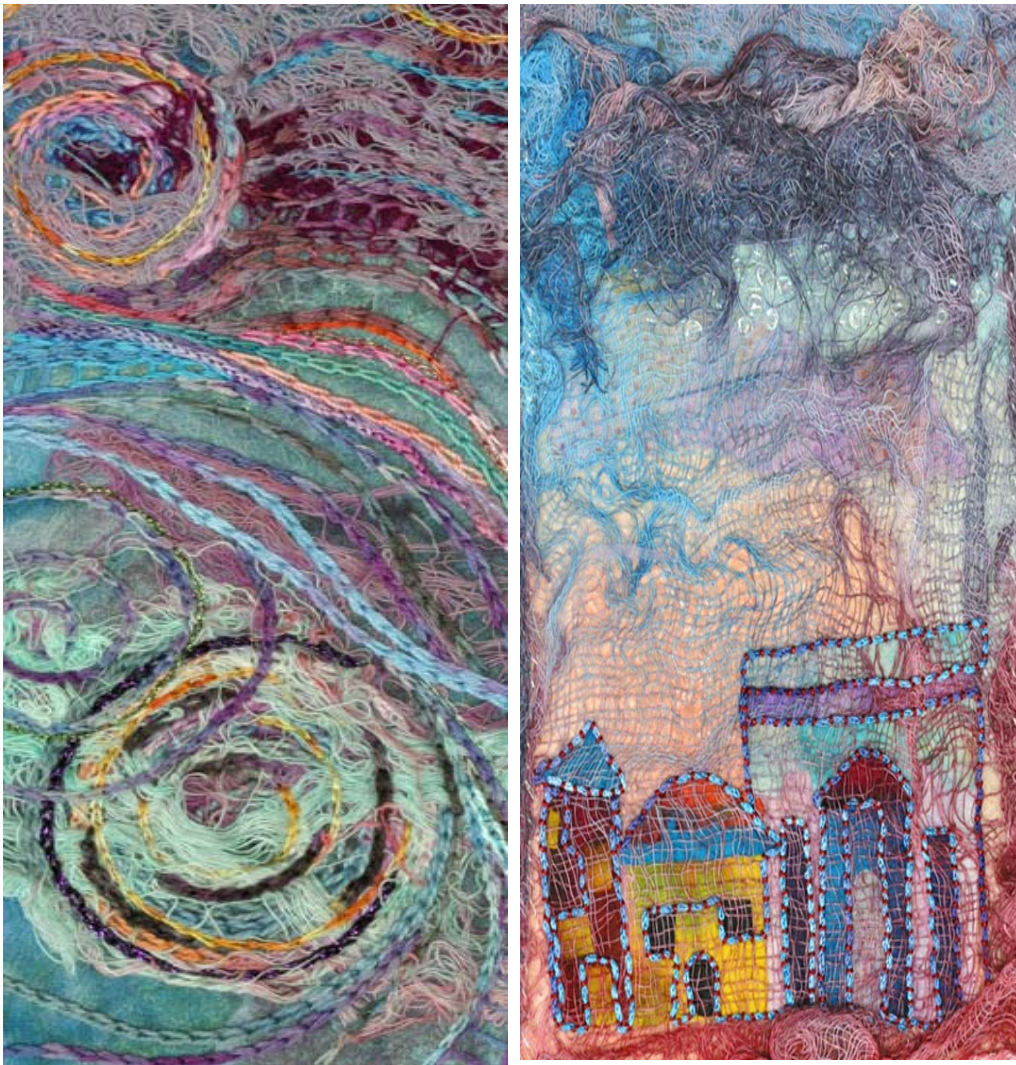


# Advanced Studies in Experimental Stitch 301

## Level 3 Certificate



© Mary Telford - photography by Gail Harker

START DATE: 15 AUGUST 2012  
CLASS NAME: **ASTERS**

**Inside**

- *The Syllabus*
- *Schedule at a Glance*
- *Fees*
- *Registration*

## Asters

### Class Name - Asters

The name, *Asters*, has nothing to do with the type of art and design we will be creating. We have adopted the practice of identifying each class by the name of a flower. This helps to create a visual identity for each class.

### About the Course

The course is conducted over 41 days and is approximately 304 hours attended over almost two years. It focuses on combining the skills of design, machine and hand stitch to develop complex finished items to a professional level.

**Prerequisites:** There are four prerequisites for this course. A potential student must be enrolled in or have completed all four courses listed below: Level 1 Experimental Hand Stitch, Level 1 Experimental Machine Stitch, Level 2 Studies in Design and Experimental Hand and Machine Stitch and Level 3 Studies in Art and Design.

## The Instructor

Gail Harker, LCGI, is a Canadian who resided for nearly 20 years in Britain, until returning to the US in 1995. She moved to Britain in 1976 with her American husband and family. She studied art in Canada, England and Scotland. She completed both Parts 1 and 2 (Diploma) of the City & Guilds Design and Embroidery course with *Distinction* in both parts. She was awarded the Senior Award of Licentiatehip (LCGI) by the City & Guilds Institute. Gail has previously taught several City & Guilds Embroidery courses, and was, for many years, a City & Guilds External Verifier for various colleges in Great Britain. She has authored five books: *Embroidery Skills: Machine Embroidery* (published internationally in five languages), *Fairy Tale Quilts and Embroidery*, *Christmas Stitches*, *Creative Machine Embroidery* and *Tassel Making*. She is a contributing author to: *Starting to Stitch Creatively* (Batsford - London) wherein she authored the section on Materials, and the Machine Embroidery chapters of the *Merehurst Book of Needlework*. Since moving to the United States she has taught over 60 Certificate and Diploma Classes in Design and Embroidery to students from all parts of North America. Gail is a highly sought after international instructor and lecturer.



© 2006 Joanne Rieger - bag

## Advanced Studies in Experimental Stitch 301 Level 3

## Asters Course Schedule at a Glance

Sessions 2 through 7 will have a Tutorial Day at the beginning of each session. This day will not be used for teaching, as such, but is devoted to a one-on-one tutorial with student and instructor. Students will use this day to prepare for the session, use the library, or to do special tutorial day assignments while awaiting their tutorial appointment time. It is important to attend the entirety of the Tutorial Day in addition to the other class days. Session 1 will be 5 full instructional days. Session 8 will be dedicated to an exhibition or Students in Residence Open Day.



© 2006 Jeri Oswald - embroidered shoe

### 2012

- Session 1* 15 - 19 August (5 days)  
*Session 2* 14 - 18 November (5 days)

### 2013

- Session 3* 2 - 6 March (5 days)  
*Session 4* 5 - 9 June (5 days)  
*Session 5* 4 - 8 September (5 days)  
*Session 6* 4 - 8 December (5 days)

### 2014

- Session 7* 22 - 26 March (5 days)  
*Session 8* 8 - 3 July Exhibition Session  
 - (6 days)

### Timetable for Session 1

- Day 1 - 9 a.m. - 6 p.m.  
 Day 2 - 9 a.m. - 6 p.m.  
 Day 3 - 9 a.m. - 6 p.m.  
 Day 4 - 9 a.m. - 6 p.m.  
 Day 5 - 9 a.m. - 3 p.m.

### A Typical Timetable for Other Sessions

- Day 1 - Tutorial Day  
 Day 2 - 9 a.m. - 6 p.m.  
 Day 3 - 9 a.m. - 6 p.m.  
 Day 4 - 9 a.m. - 6 p.m.  
 Day 5 - 9 a.m. - 3 p.m.

*The last day of class will always end at 3:00 p.m.*

## Advanced Studies in Experimental Stitch 301

### Course Aims

*Our overriding aim is to provide an environment in which to learn, appreciate and create the art of stitchery and to provide the opportunity for students to explore art based stitch in further depth.*

*You will:*

- ◆ Develop innovative ideas supported by a thorough knowledge of a range of materials, processes and techniques.
- ◆ Work to develop an individual *Portfolio of Stitched Samples*
- ◆ Extend your customized library of stitches and effects using a variety of media.
- ◆ Gain a working knowledge of a range of new fabrics, threads and papers suitable for stitchery.
- ◆ Create your own portfolio using various presentation styles
- ◆ Learn how to integrate design, color and stitch for innovative effects.
- ◆ Explore and experiment with stitch.
- ◆ Build a structured method of working.
- ◆ Learn to document and evaluate your own work.
- ◆ Develop sketchbooks, notebooks and other presentation forms to explore and display combinations of design and stitch ideas.
- ◆ Begin an independent historical stitch study of the Native Peoples of the Americas and European Settlers in North America.
- ◆ Derive inspiration and design ideas from historical and contemporary stitch studies.
- ◆ Further a collection of photos of other textile artists and art forms.



© 2006 Johette Brock—panel

*When creating an assessment, the following aims will be met:*

1. Work from a brief that reflects a potential client's requirements and preferences.
2. Plan and prepare working designs and samples for a clients approval.
3. Incorporate client preferences in the final design.
4. Make an original item to a high standard of design and craftsmanship, in accordance with a client's approved design.

*Students will be prompted to work to high standards of art and craftsmanship. Holders of the certificate for this course will be deemed to be accomplished stitch artists.*

## Assessments

Students will plan, prepare, design, and make original items to a high standard of craftsmanship. Ideas and inspirations for all of the Finished Items and Portfolio of Samples will be derived from the Design Unit.

### Assessments

1. A 3-D Item - Structure, Vessel, Bag, Container or Sculpture
2. A Framed piece of Stitched Artwork
3. A Wall Hanging, Banner, Flag or Quilt
4. Portfolio of Stitched Samples,
5. Independent Study of the Native Peoples of the Americas and Settlers in North America

### Materials, Stitches, Techniques, and Effects

A wide variety of fabrics will be used: e.g. cotton, blends, silk, wool, velvet, synthetic, felt, leather, flannelette, plastic, acetates, papers, foils, mesh, metallics, transparent fabrics, and others. A number of backings, battings, stiffeners, supports and linings will also be utilized.

A wide variety of thread types and sizes will be used in both Hand and Machine Stitchery.

**Stitch by Hand and Machine** - An extensive number of contemporary stitches and techniques will be used. They include some of the following: appliqué, quilting, shadow techniques, cut through and layering, fusing, fraying, singeing, distressing, insertions, couching and laid work, darning, dissolvable fabrics, recycled materials, manipulated fabrics and threads and Cross Stitch .

**Historic Studies of Stitch and Technique:** Beads and glass, Broderie Anglaise, Cutwork, English Quilting, Italian Corded Quilting and Trapunto. A special independent study of the Native Peoples of the Americas and European Settlers in North America will be started prior to the beginning of the course.

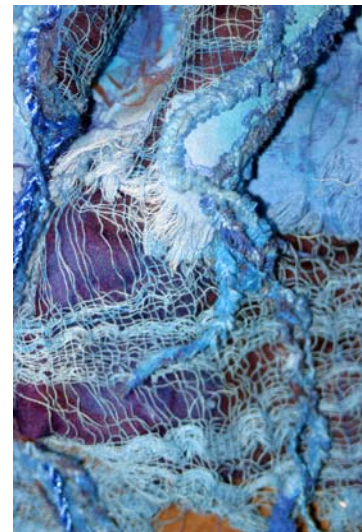
**Painted and Dyed** papers, fabrics and other materials.



© 2006 Miram Rabitz -panel



Sample book



Detail of panel

## Advanced Studies in Experimental Stitch - Session Workshops

Students will add to samples that were made at Level 1 and Level 2 Embroidery. Class session workshops will focus on the following:

### Design and Color

- ◆ Refresh and review design unit
- ◆ The symbolism of color, color schemes
- ◆ Color Mixing using Transparent fabrics
- ◆ Structures and elements of design.
- ◆ Integration of design and stitch.



© 2006 Miriam Rabitz



© 2006 Leanne Clifford - vessel

### Paint, Print and Dye

- ◆ Procion Mx Dye - Multiple methods used on fabrics and papers
- ◆ Dye-na-Flow, acrylics and printing ink
- ◆ Transfer-printed images on fabrics
- ◆ Resist methods on fabric
- ◆ Discharge methods using paints and dyes
- ◆ Stencils and templates using oil sticks and other wet media.
- ◆ Printmaking
- ◆ Drawing and painting on paper and fabric
- ◆ Foils and embossing on fabric.

### Embroidered and Quilted Surfaces:

- ◆ Historic inspirations from 16th, 17th, and 18th c.
- ◆ Combine structural patterns with embroidered motifs.
- ◆ Paint, dye and print patterns on fabric surfaces
- ◆ Sample a variety of layering methods.



© 2006 Miriam Rabitz - panel detail

### Portfolio of Samples

- ◆ Hand and Machine Stitches.
- ◆ Beads, Buttons and Sequins.
- ◆ Braids, Cords and Tassels.
- ◆ Lace and open weaves.
- ◆ Edges will include frayed, tasseled, fringed, bound edge.
- ◆ Historic Stitches & Techniques Study

## *Historical Stitches and Techniques Study*



© 2006 Liz Anne Jonassen

Students will visit library, museums and websites to collect pictures and information regarding the stitches and techniques of

1. Native Peoples of the Americas (North,) Central or South America
2. European Influences on Settlers in Canada OR the United States.



© 2006 Carol Postorino - acrylic

Motifs and patterns of motifs will be sketched. A few very small sample studies will be stitched.

A Research Worksheet will be given to students upon registration of the course. Independent Study will begin before the start date of the course.

### **Appliqué**

- ◆ Various types of appliqué
- ◆ Fused appliqué
- ◆ Inserted and inlay appliqué

### **Combination of Hand and Machine**

- ◆ Hand Embroidery
- ◆ Automatic and free stitching.
- ◆ Combinations of fused, bonded, layered canvas with surface decoration.

### **Construction and Design for Finished Items**

- ◆ 3 - D Items - vessel, sculpture etc.
- ◆ Wall hanging or panel
- ◆ And others

### **Stitch on paper**

- ◆ Handmade paper
- ◆ Silk Paper

### **Miscellaneous**

- ◆ Study contemporary artists, galleries and museums.
- ◆ Keep a diary/journal of projects.
- ◆ Make presentations of design work for finished items.

### **Tutorials**

On-going and individual tutorials.



© 2009 Susan Lenarz - vessel

## Asters - Course Payments

### Advanced Studies in Experimental Stitch 301

**Total Tuition Cost - \$3995 (US Dollars)**

The total cost of the course may be made in one payment of \$3995.

-OR-

The total cost of the course may be split into three installments, to make up a total of \$4095.

-OR-

The total cost of the course may be split into seven installments, to make up a total of \$4245. It is essential that payments be made on time. Failure to pay on time could result in the candidate being withdrawn from class enrollment. Payments should be made in advance of, or on, the due date.

**Course cost divided into three payments:**

Payment 1 (\$1500) due: 1 May 2012  
 Payment 2 (\$1500) due: 1 September 2012  
 Payment 3 (\$1095) due: 1 January 2013

**Total Course Cost: \$4095**

**Course cost divided into 9 installments**

Installment 1 (\$750) due: 1 May 2012  
 Installment 2 (\$700) due: 1 July 2012  
 Installment 3 (\$650) due: 1 Sept. 2012  
 Installment 4 (\$625) due: 1 Nov. 2012  
 Installment 5 (\$600) due: 1 January 2013  
 Installment 6 (\$575) due: 1 March 2013  
 Installment 7 (\$345) due: 1 May 2013

**Total Course Cost: \$4245**

**Nonrefundable deposit** of \$200 will hold your place on this course until **1 May 2012** when the first installment or payment in full is required. Deposit will apply to last installment.



© 2006 Denise Liberio - embroidered container



Inside detail

## Asters Course Fees, Charges, Payment, Terms and Conditions

### Responsibility

Submission of the signed course registration form constitutes the student's acceptance of all terms and conditions stated in the information supplied, and agreement that the Gail Harker Creative Studies Center cannot be held responsible or liable to our students for any act of omission, or for any injury, illness, death, loss, accident, delay or irregularity which may be occasioned during the conduct of any course of study. We assume no responsibility for losses or additional expenses due to influences beyond our control. Personal effects and art supplies (other than art materials supplied for classroom instruction) are the sole responsibility of the student at all times. We reserve the right to cancel any program in which case we are liable only for any fees paid to Gail Harker Creative Studies Center. We reserve the right to re-schedule any class or replace any instructor without refund to the student. We reserve the unconditional right to terminate a student's enrollment without refund in the event of unreasonable conduct on the part of the student.

### Refund Policy

Refunds will be made under the following circumstances:

- ♦ A refund of 75% of fees paid (other than the nonrefundable deposit) will be made upon written application received at Gail Harker Creative Studies Center no later than 60 days prior to the start of the first session.
- ♦ All fees will be refunded if for any reason the class is canceled before the start date.
- ♦ If, for any reason, sessions are canceled after the course has begun, refunds will be prorated based on instructional time completed versus time remaining.

Refunds will **not** be made under the following circumstances:

- ♦ **No refunds** will be made later than 60 days prior to start of the first session, due to the advance commitment demanded of the Center.
- ♦ No money will be refunded for sessions not attended.
- ♦ No refunds will be made to any student who resigns mid-course.

## Student Costs Other Than Tuition

**Lab Materials** - This course will require an additional financial commitment for dyes, paints, and other art materials. It is not possible to estimate the costs, but prospective students should allow approximately \$20 to \$30 per session.

**Personal Supply of Materials** - Please note that each student will need to maintain their own personal supply of basic materials, tools, and implements for use in completing assessments at home. Classroom materials may be used for working sampling ideas in the classroom, but not for projects at home.

**Travel, Food, and Accommodation** - Students will be individually responsible for all associated costs and expenses such as: travel, accommodation, meals, etc. 90 days prior to the course start date, we will contact you via e-mail to confirm the class. Please do not confirm travel arrangements until you have heard from us.

*Please Note: Classes tend to fill up very quickly. Late enrollments may be accepted, but places cannot be guaranteed. Course participants must make all arrangements for their own travel and accommodations.*

## General Course Information

### Advanced Studies in Experimental Stitch 301

### Level Three - Asters

#### Registration at the Gail Harker Creative Studies Center

You will receive a registration number when you register as a student at our center, and at the first session, you will receive a student identification card.

#### Student Log Book

Along with your registration, you will receive a logbook from our center that allows you to monitor the progress and sign offs of the work from each session. This book contains each student's record of achievement and functions as proof of satisfactory completion of all required work - to the standard.



© 2006 Gloria Sharon Daly - panel

#### Certificate in Advanced Studies in Experimental Stitch , Level 3

At the conclusion of the course, when Log Book requirements have been completed to the established standard and signed off by the tutor the Certificate will be issued.

#### The Course

The full Advanced Studies in Experimental Stitch Level 3 syllabus is conducted over eight sessions at the Gail Harker Creative Studies Center.

#### Class

Any group of students who sign up for a specific and defined period of study and who will be known by a designated class name (i.e. Asters etc.)

#### Session

A set of predefined and scheduled contiguous teaching days - see the specific schedule for Asters.



Gail Harker Creative Studies Center  
P.O. Box 1000  
12636 Chilberg Rd.  
La Conner, WA 98257  
Phone (360) 279-2105, Fax (360) 707-7188  
gail@gailcreativestudies.com, www.gailcreativestudies.com

## Asters Registration

### Advanced Studies in Experimental Stitch 301

Name as you would like on your Certificate \_\_\_\_\_

Name as you prefer to be called \_\_\_\_\_

Address \_\_\_\_\_

City \_\_\_\_\_ State \_\_\_\_\_ Zip/Postal Code \_\_\_\_\_

Phone \_\_\_\_\_ Fax \_\_\_\_\_ E-mail \_\_\_\_\_

Work Phone \_\_\_\_\_ Work E-mail \_\_\_\_\_

**Asters- Beginning with Session 1 on 15 August 2012.**

**Fee: \$3995 (\$4095 in three installments, or \$4245 in seven installments - see Course Fees, Terms, and Conditions)**

I elect to pay in three payments and agree to pay according to the following schedule:

- Payment 1 (\$1500) due: 1 May 2012
- Payment 2 (\$1500) due: 1 September 2012
- Payment 3 (\$1095) due: 1 January 2013

I elect to pay in seven installments and agree to pay according to the following schedule:

- Installment 1 (\$750) due: 1 May 2012
- Installment 2 (\$700) due: 1 July 2012
- Installment 3 (\$650) due: 1 Sept. 2012
- Installment 4 (\$625) due: 1 Nov. 2012
- Installment 5 (\$600) due: 1 January 2013
- Installment 6 (\$575) due: 1 March 2013
- Installment 7 (\$345) due: 1 May 2013

Payment in Full enclosed - \$3995

Payment 1 of 3 enclosed - \$1500

Installment 1 of 7 enclosed - \$750

Non refundable deposit only enclosed - \$200 - to hold my place until 1 May 2012 - Full deposit will be applied to last tuition installment or payment.

**How to make payments**

All payments may be made in US Dollars by Visa, Mastercard, American Express, or personal check or money order payable to:

Gail Harker Creative Studies Center  
P.O. Box 1000  
12636 Chilberg Rd.  
La Conner, WA 98257  
360-279-2105  
gail@gailcreativestudies.com

*I have read and understood the terms and conditions as outlined on pages 6 and 7, and hereby agree to them:*

\_\_\_\_\_  
*Signature required for registration (please photocopy this form and retain for your records)*

**90 days prior to the course start date, we will contact you via e-mail to confirm the class. Please do not confirm travel arrangements until you have heard from us.**



**Gail Harker Creative Studies Center**  
**P.O. Box 1000**  
**12636 Chilberg Rd.**  
**La Conner, WA 98257**

**Phone (360) 279-2105**  
**Fax (360) 707-7188**  
**[gail@gailcreativestudies.com](mailto:gail@gailcreativestudies.com)**  
**[www.gailcreativestudies.com](http://www.gailcreativestudies.com)**