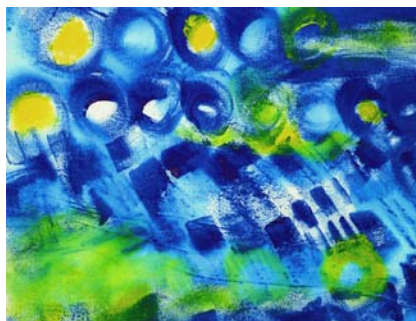
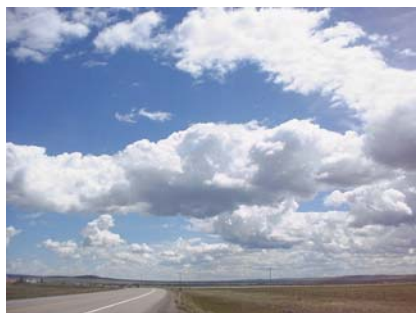


## GAIL HARKER, L.C.G.I.



Gail Harker, LCGI, is a Canadian who resided for nearly 20 years in Britain, until returning to America in 1995. She moved to Britain in 1976 with her American husband and family. She studied art in Canada, Scotland, and England. She completed both Parts 1 and 2 of the City and Guilds Design and Embroidery course, with *Distinction* in both parts. She qualified for the Senior

Award of *Licentiate*ship (LCGI) given by the City and Guilds of London Institute. Gail is a teacher of several City and Guilds Embroidery courses, and is a City and Guilds External Verifier for Embroidery and Patchwork & Quilting. Gail founded and operates the *Gail Harker Creative Studies Center* in Oak Harbor, Washington. She pioneered the establishment of the first City & Guilds Creative Studies Centers in North America. She authored five books: *Embroidery Skills: Machine Embroidery* (published internationally in five languages), Merehurst, *Fairy Tale Quilts and Embroidery*, Merehurst, *Christmas Stitches*, Cassell, and *Tassel Making*, self published. She is a contributing author for: *Starting to Stitch Creatively* (Batsford), wherein she authored the section on Materials, and contributed to the Machine Embroidery chapters for the *Merehurst Book of Needlework*. Her latest book, *Creative Machine Embroidery*, was published in 2001 by Batsford.



All photographs ©Gail Harker, 2009



### Terms and Conditions

**Responsibility** - Submission of the signed course registration form constitutes the student's acceptance of all terms and conditions stated in the information supplied, and agreement that the Gail Harker Creative Studies Center cannot be held responsible or liable to our students for any act of omission, or for any injury, illness, death, loss, accident, delay or irregularity which may be occasioned during the course of any course of study. We assume no responsibility for losses or additional expenses due to influences beyond our control. Personal effects and art supplies (other than art materials supplied for classroom instruction) are the sole responsibility of the student at all times. We reserve the right to cancel any class in which case we are liable only for any fees paid to Gail Harker Creative Studies Center. We reserve the right to reschedule any class or replace any instructor without refund to the student.

**Refunds** - A refund of 50% of fees paid (other than the nonrefundable deposit) will be made upon written application received at Gail Harker Creative Studies Center no later than 60 calendar days prior to the start of the class. No refunds will be made later than 60 days prior to start of the class because of the advance commitment required for the instructor and facility. All fees will be refunded if for any reason the class is canceled before the start date.

The nonrefundable deposit will hold your place. Deposit will apply to tuition. **Please note:** Students will be individually responsible for all associated costs and expenses such as: travel, accommodation, meals, etc. 90 days prior to the course start date, we will contact you via e-mail to confirm the class. Please do not confirm travel arrangements until you have heard from us. All payments may be made by personal check, money order, VISA, MasterCard, or American Express credit cards, payable to Gail Harker Creative Studies Center.



569 Technical Drive  
Oak Harbor, WA 98277  
Phone: (360) 279-2105 Fax: (360) 279-0420  
gail@gailcreativestudies.com  
www.gailcreativestudies.com



LEVEL 1 CERTIFICATE  
**ART AND DESIGN**  
COLOR STUDIES

16 - 20 OCTOBER 2010

## COLOR STUDIES



Color, color and more color will be the focal point of this 5-day hands-on class. A color reference sketchbook will be started in class that will provide you with new

approaches to color, a lexicon of color schemes, and a valuable reference sourcebook for years to come. I will provide colorful notes and illustrations for students to add to their sourcebook of information. The course will provide the sound basics of color theory, stripped to its essentials.



During the course you will be working with:



- ◆ Color theory
- ◆ Color wheels
- ◆ A glossary that will assist you to work and learn what it all means
- ◆ Primary, secondary, and tertiary colors
- ◆ Achromatics and neutrals
- ◆ Color intensity
- ◆ Tints, tones and shades
- ◆ Color manipulation
- ◆ Proportion of colors
- ◆ Creating color charts in your sketchbook
- ◆ Symbols and color associations
- ◆ Color using word association

We will work with color schemes in the following ways:

- ◆ Color schemes derived from color wheel references.
- ◆ Color schemes derived from the world around us.
- ◆ Creating pages of vivid colors on papers and in your sketchbook.
- ◆ Small paper collages using Color schemes.
- ◆ Color studies using paper and paint.

You will also learn about using acrylic paint and how to paint with the medium:

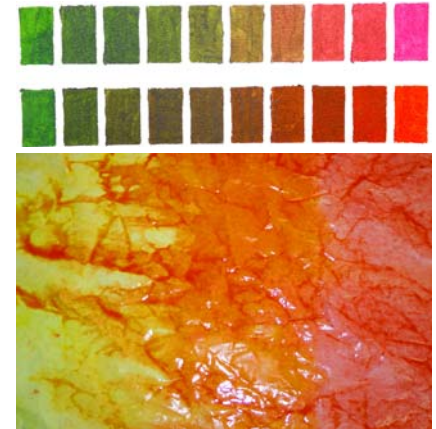
- ◆ A small collection of basic acrylic colors will be used.
- ◆ Color mixing to produce a myriad of new colors from acrylic paints.

**Who is the class for?** *The course is a prerequisite for Level 3 Studies in Art and Design.* It is a hands-on class for those who are new to color, or would like to better understand how color works. It could be an aid to the following people: quilters, embroiderers, weavers, dressmakers, knitters, floral arrangers, horticulturalists, woodworkers, designers and, in short, anyone who would like to look and work with color in a more informed way. No prior experience is necessary. *Please note that this is not a drawing class.*



## Level 1 Certificate in ART AND DESIGN COLOR STUDIES

\$675



**16 - 20 OCTOBER 2010**

A \$100 US deposit will hold your place in this course until 1 July 2010, at which time the full tuition/balance is due.

### COURSE SCHEDULE

Saturday, 16 October	9:00 a.m. to 6:00 p.m.
Sunday, 17 October	9:00 a.m. to 6:00 p.m.
Monday, 18 October	9:00 a.m. to 6:00 p.m.
Tuesday, 19 October	9:00 a.m. to 6:00 p.m.
Wednesday, 20 October	9:00 a.m. to 3:00 p.m.

*Approximate lunch hour will be 12:30 - 1:30 p.m.*

### Student needs for the Course:

- ◆ There is a Supply Fee of \$25.00 for the course, to include some media that will be used in the classroom. The amount is payable at the session. An additional supply list (papers, art supplies, etc.) will be sent to the student prior to the course.