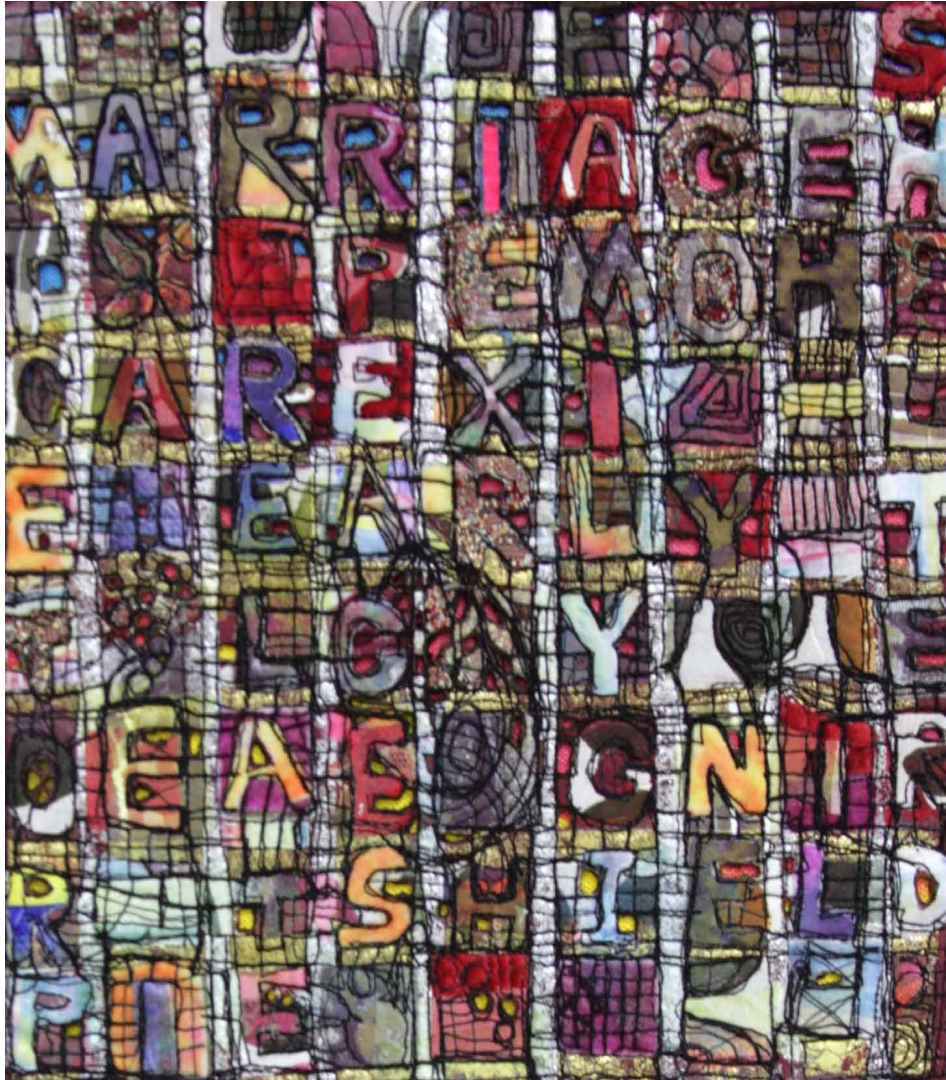


Studies in Design and Experimental Machine Stitch 201



© Susan Lenarz

START DATE: 20 NOV. 2019
CLASS NAME: SAFFRON –
NEW COURSE –5 SESSIONS

Inside

- *The Syllabus*
- *Schedule at a Glance*
- *Fees*
- *Registration*



ail Harker, LCGI, is a Canadian who resided for nearly 20 years in Britain, until returning to the US in 1995. She moved to Britain in 1976 with her American husband and family. She studied art in Canada, England and Scotland. She completed both Parts 1 and 2 (Diploma) of the City & Guilds Design and Embroidery course with *Distinction* in both parts. She was awarded the Senior Award of

Licentiate (LCGI) by the City & Guilds Institute. Gail has previously taught several City & Guilds Embroidery courses, and was, for many years, a City & Guilds External Verifier for various colleges in Great Britain. She has authored five books: *Embroidery Skills: Machine Embroidery* (published internationally in five languages), *Fairy Tale Quilts and Embroidery*, *Christmas Stitches*, *Creative Machine Embroidery* and *Tassel Making*. She is a contributing author to: *Starting to Stitch Creatively* (Batsford - London) wherein she authored the section on Materials, and the Machine Embroidery chapters of the *Merehurst Book of Needlework*. Since moving to the United States she has taught numerous Certificate and Diploma Classes in Design and Embroidery to students from all parts of North America.

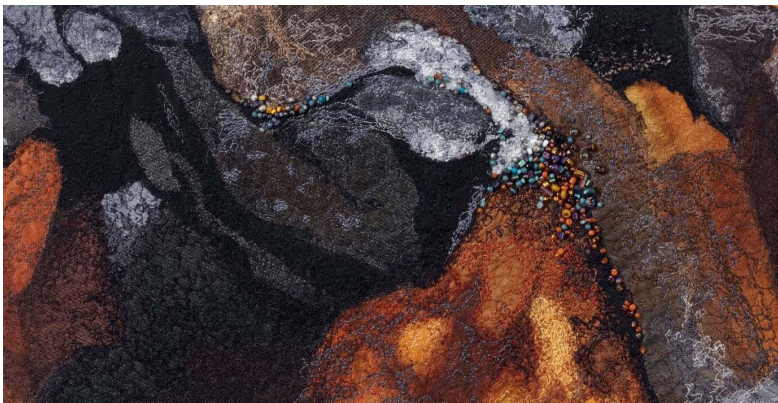


Saffron

Class Name - Saffron

The name, *Saffron*, has nothing to do with the type of art and design we will be creating. We have adopted the practice of identifying each class by the name of a flower. This helps to create a visual identity for each class.

The number of sessions scheduled and the duration over which they are offered is a reflection of the breadth and depth of the content this machine stitch course covers. Each class session is geared to the introduction of new material. The program assumes that each student will complete assigned work between sessions in order to stay abreast of the class. Some of the work to be accomplished for this course is completed in the classroom. Those who successfully complete the program to the required standard will be awarded the Gail Harker Center for Creative Arts Certificate.



© Ellen Anderson



Gail and Karen Nelson

Studies in Design and Experimental Machine Stitch 201 Level 2 Course Aims

Our overriding aim is to provide an environment in which to learn and appreciate the art of stitchery. Students will:

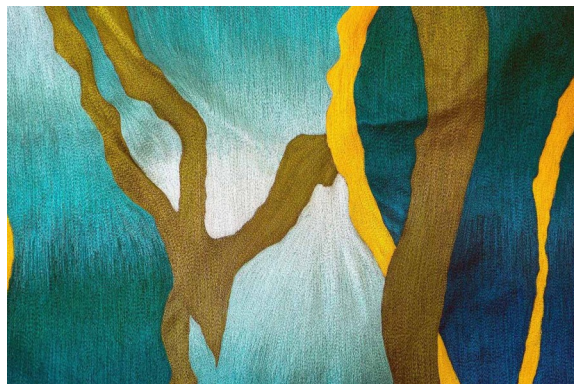
- ◆ Develop an individual *Portfolio of Stitched Samples*
- ◆ Understand stitch construction and execution
- ◆ Create a customized library of stitches and effects using a variety of media
- ◆ Gain a working knowledge of a range of fabrics, threads and papers suitable for stitchery
- ◆ Gain knowledge of the tools and equipment
- ◆ Learn how to integrate design, color and stitch, for innovative effects
- ◆ Explore and experiment with stitch
- ◆ Create a folio using various presentation styles
- ◆ Develop structured work methods
- ◆ Learn to document and evaluate one's own work
- ◆ Develop sketchbooks and notebooks to explore and display ideas
- ◆ Begin a small collection of machine stitch and stitch artist photos
- ◆ Begin a collection of photos of lines, line patterns, and textures
- ◆ Derive inspiration and design ideas from historical and contemporary stitch studies

When creating an assessment, the following aims will be met:

1. Work from a design brief that reflects requirements and preferences
2. Plan and prepare working designs and samples
3. Incorporate preferences in the final design
4. Make an original item to a high standard of design and craftsmanship

Students will be prompted to work to high standards of art and craftsmanship. Holders of the certificate for this course will be deemed to be accomplished stitch artists.

Those who have studied level 1 Machine are qualified to apply.

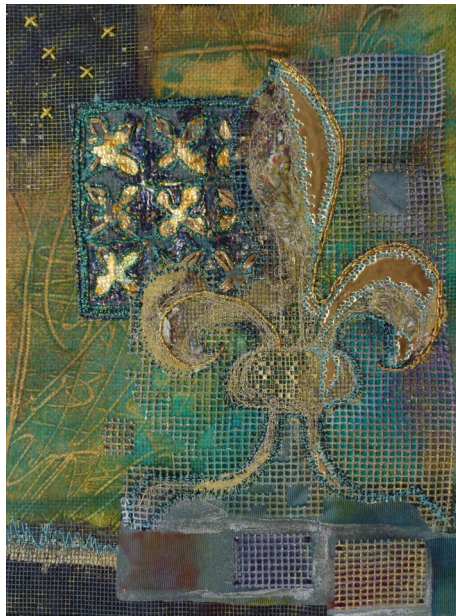


Finished Items

Ideas and inspirations for the Finished Items and Portfolio of Samples will be derived from studies in design.

Assessments

1. A variety of stitched samples to create elements of art and design
2. Computer Printed, Layered and Stitched Samples
3. Sketchbook for design and documentation
4. Machine Sketchbooks
5. Appliqué/Collage
6. Portfolio of Stitched Samples



Susan Lenarz



© Ellen Anderson

Studies in Design and Experimental Machine Stitch 201

A Description of the Course

Students will add to samples created at Level 1 Machine Embroidery.

Session workshops will focus on the following:

Design and Color

- ◆ Color theory and color schemes
- ◆ Lines, line patterns, shapes and textures
- ◆ Structures and elements of design.
- ◆ Integration of design and embroidery
- ◆ Combine structural patterns with embroidered motifs



© Gail Harker



© Gail Harker

Painting, Burning and Layering

Paint Art Fabrics to create unique samples and other projects.

Layer fabrics to stitch with and without a hoop and to create textural effects.

Burn fabrics to create lacy effects and make a new fabrics.

Portfolio of Stitched Samples

- ◆ A large variety of stitches to include line, textural, construction and composite stitches
- ◆ A glossary of machine stitches will be started in class to include automatic and free machining
- ◆ Mixing stitches and techniques
- ◆ Cords, laces and edges - a variety will be created

Techniques and Special Effects

- ◆ Collage/ Appliqué/Cut Back Appliqué
- ◆ Fusing and a variety of layering methods
- ◆ working with soluble fabrics
- ◆ Fraying and distressing
- ◆ Couching



© Deborah Hickey-Tiernan

A Description of the Course

Fabrics and Threads Used

A variety of fabrics and other stitch surfaces will be used: e.g. linen, cotton, blends, silk, synthetic, felt, plastic, papers, foils, metallics, transparent fabrics, and others. A number of backings, battings, stiffeners, supports, and linings will also be utilized. A variety of machine thread types and sizes will be used, to include cotton, silk, wool, viscose, nylon, metallics, and others.

Construction and Design for Finished Items

Different construction methods and ways in which to approach books and book covers with stitch will be taught in the sessions.

Research and Study

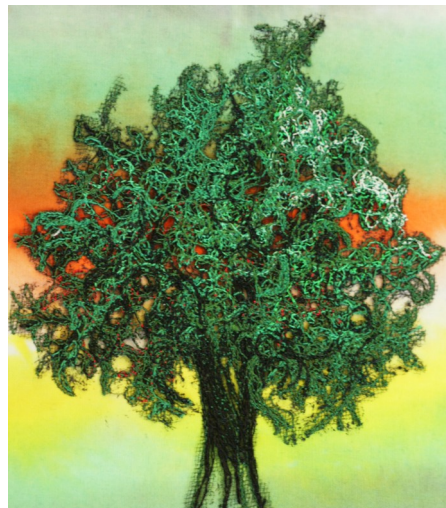
- ◆ Study contemporary and historic artists
- ◆ Visit galleries and museums independently
- ◆ Keep a diary/journal of projects
- ◆ Historic inspirations for Machine Embroidery

Presentation of Course Work

- ◆ Make presentations of design work for finished items
- ◆ Display finished items



© Gail Harker



© Gail Harker

Course Fees, Charges, Payment, Terms, and Conditions

Responsibility

Submission of the signed course registration form constitutes the candidate's acceptance of all terms and conditions stated in the information supplied, and agreement that the Gail Harker Center for Creative Arts cannot be held responsible or liable to our candidates for any act of omission, or for any injury, illness, death, loss, accident, delay or irregularity which may be occasioned during the course of any course of study. We assume no responsibility for losses or additional expenses due to influences beyond our control. Personal effects and art supplies (other than art materials supplied for classroom instruction) are the sole responsibility of the student at all times. We reserve the right to cancel any program in which case we are liable only for any fees paid to Gail Harker Center for Creative Arts. We reserve the right to reschedule any class or replace any instructor without refund to the student. We reserve the unconditional right to terminate a student's enrollment without refund in the event of unreasonable conduct.

Refund Policy

Refunds will be made under the following circumstances:

- ♦ A refund of 75% of fees paid will be made upon written application received at Gail Harker Center for Creative Arts no later than 30 days prior to the start of the first session.
- ♦ All fees will be refunded if for any reason the class is canceled before the start date.
- ♦ If, for any reason, sessions are canceled after the course has begun, refunds will be prorated based on instructional time completed versus time remaining.

Refunds will **not** be made under the following circumstances:

- ♦ **No refunds** will be made later than 30 days prior to start of the first session, because of the advance commitment demanded of the Center.
- ♦ No money will be refunded for sessions not attended.
- ♦ No refunds will be made to any candidate who resigns mid-course.

Student Costs Other Than Tuition

Lab Materials - This course will require an additional financial commitment for dyes, paints, and other art materials. It is not possible to estimate the costs, but prospective students should allow approximately \$20 to \$30 per session.

Personal Supply of Materials - Please note that each student will need to maintain their own personal supply of basic materials, tools, and implements for use in completing assessments at home. Classroom materials may be used for working sampling ideas in the classroom, but not for projects at home. Let me know if you are not able to bring your own sewing machine.

Travel, Food, and Accommodation - Students will be individually responsible for all associated costs and expenses such as: travel, accommodation, meals, etc. 30 days prior to the course start date, we will contact you via e-mail to confirm the class. Please do not confirm travel arrangements until you have heard from us.

Please Note: Classes tend to fill up very quickly. Late enrollments may be accepted, but places cannot be guaranteed. Course participants must make all arrangements for their own travel and accommodations.



General Course Information Studies in Design and Experimental Machine Stitch 201

Student Log Book

Along with your registration, you will receive a logbook from our center that allows you to monitor the progress and sign offs of the work from each session. This book contains each student's record of achievement and functions as proof of satisfactory completion of all required work - to the standard.

Certificate in Design and Experimental Hand Stitch, Level 2

At the conclusion of the course, when Log Book requirements have been completed to the standard and signed off by the tutor and student, the Certificate will be issued.

Definitions:

The Course

The full Studies in Design and Experimental Machine Stitch 201 syllabus conducted over five sessions at the Gail Harker Center for Creative Arts.

Class

Any group of students who sign up for a specific and defined period of study and who will be known by a designated class name (i.e. Clover, etc.)

Session

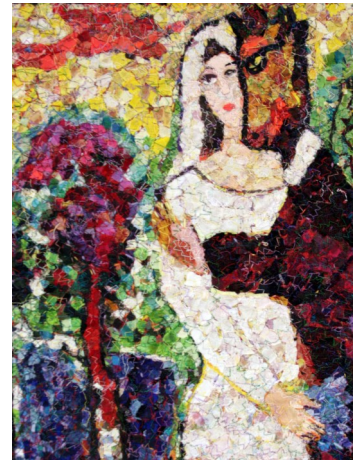
A set of predefined and scheduled contiguous teaching days
- see the specific schedule.

Tutor

All of our instructors are called tutors.

Tutorials

Short individual meetings with the tutor conducted on the first day of the session to review and discuss your work.



© Susan Lenarz



**P.O. Box 1000
La Conner, WA 98257
Phone (360) 466-0110
gail@gailcreativestudies.com
www.gailcreativestudies.com**